

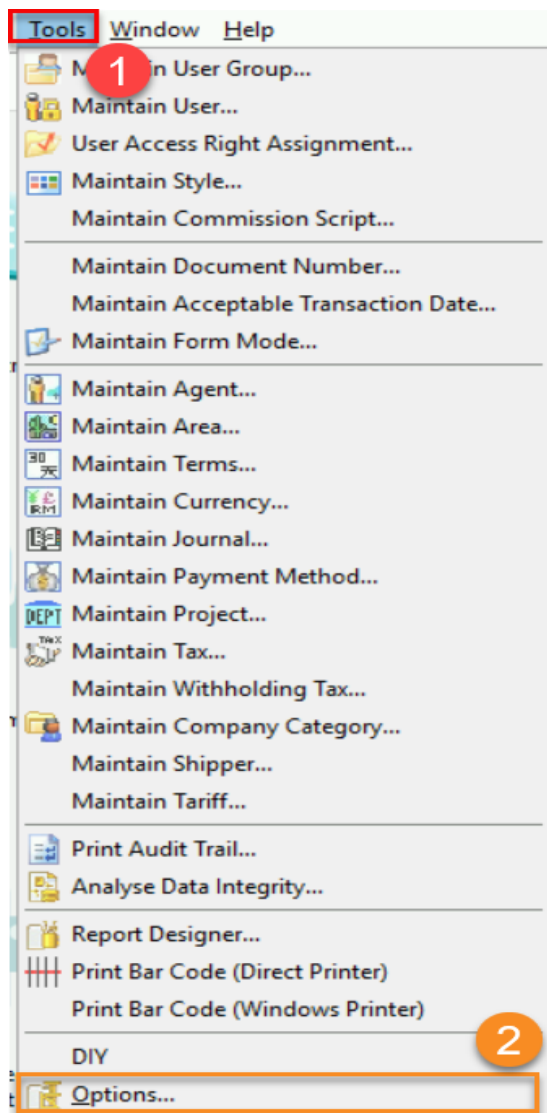
How To Auto Post GL Stock Value With Project

Auto Maintain Stock Value with Project is supported in Version 839 and Above.

1: Turn on Auto Post GL Stock Value Option

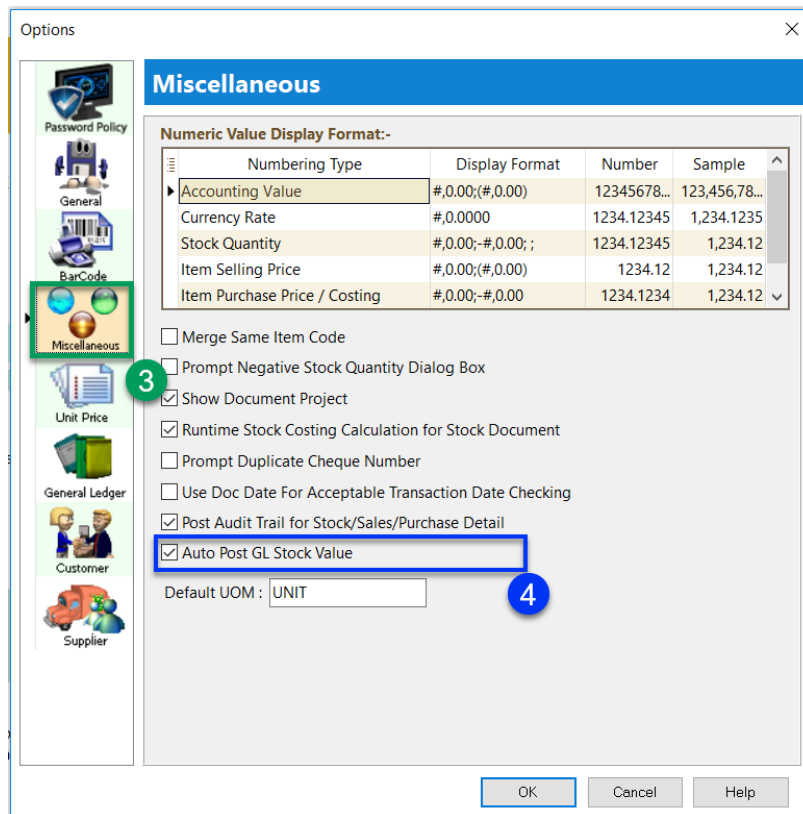
Step 1 : Click on Tools

Step 2 : Click on Option



Step 3 : Click on Miscellaneous

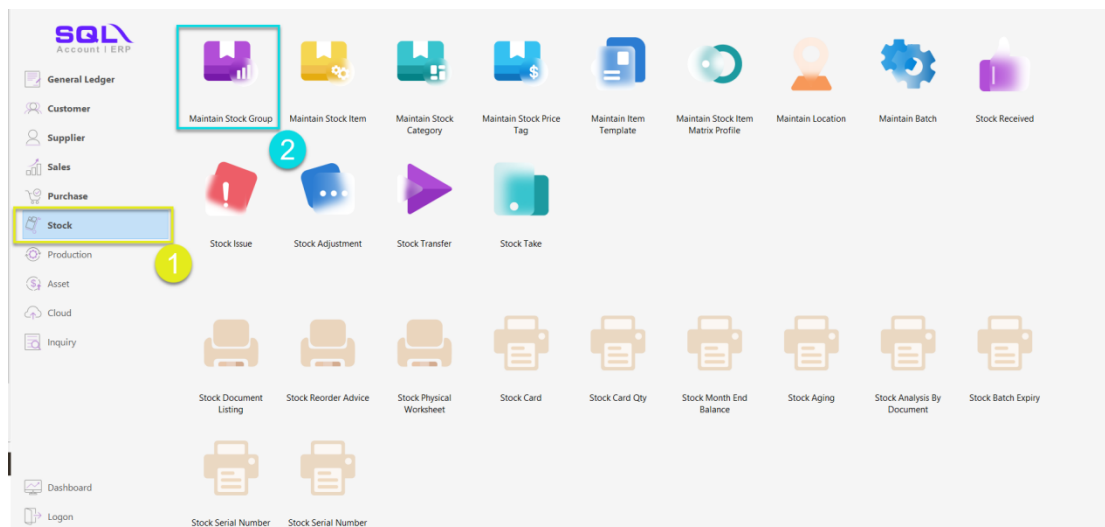
Step 4 : Tick on Auto Post GL Stock Value



Session 2 : Map Balance Sheet Stock Account in Maintain Stock Group

Step 1 : Click on Stock

Step 2 : Click on Maintain Stock Group



Step 3 : Click on Edit

Step 4 : Choose the Account Code for your Stock Value Posting

Step 5 : Click on Save

Maintain Stock Group

Code: Active

Description:

Costing Method:

GL Account Code :-

Sales Code: Purchase Code:

Cash Sales Code: Cash Purchase Code:

S. Return Code: P. Return Code:

Balance Sheet Stock:

Buttons: New, Edit, Delete, Save, Cancel, Refresh, Browse

Ensure that all Stock Groups are mapped to the ^ABalance Sheet Account Code

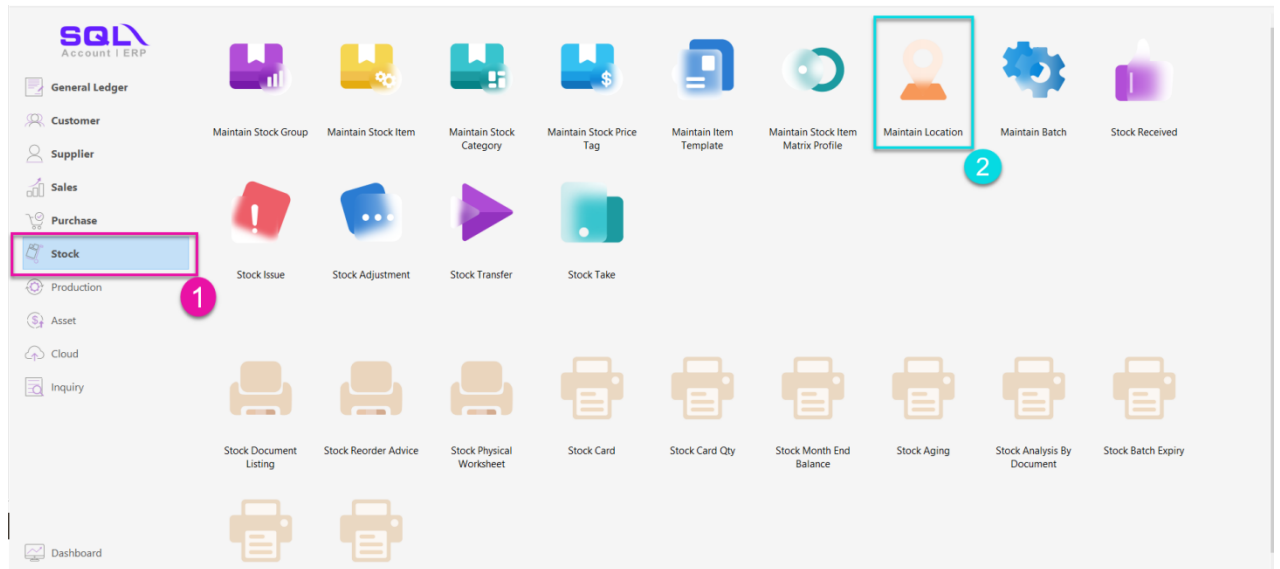
Code	Description	Sales	S/Rtrn	C/Sales	Purch...	C/Purc	P/Rtrn	Bal. Stock	Active	Costing M...
ACC	ACC							330-000	<input checked="" type="checkbox"/>	FIFO
BEDDING AC...	BEDDING ACC...	500-1...	510-000	500-1...	610-1...	610-100	612-000	330-000	<input checked="" type="checkbox"/>	FIFO
DEFAULT	DEFAULT	500-1...	510-000	500-1...	610-1...	610-100	612-000	330-000	<input checked="" type="checkbox"/>	FIFO
FURNITURE	FURNITURE	500-2...	510-000	500-2...	610-2...	610-200	612-000	330-000	<input checked="" type="checkbox"/>	FIFO
LIGHTING	LIGHTING	500-3...	510-000	500-3...	610-3...	610-300	612-000	330-000	<input checked="" type="checkbox"/>	FIFO
OTHERS	OTHERS	500-5...	510-000	500-5...	610-5...	610-500	612-000	330-000	<input checked="" type="checkbox"/>	FIFO
RAW MATERI...	RAW MATERIAL				605-2...	605-200	612-000	330-000	<input checked="" type="checkbox"/>	FIFO
RTN5Cents	5 Cents Roundi...							330-000	<input checked="" type="checkbox"/>	FIFO
STORAGE	STORAGE	500-4...	510-000	500-4...	610-4...	610-400	612-000	330-000	<input checked="" type="checkbox"/>	FIFO
TEST- BUNDLE	TEST- BUNDLE							330-000	<input checked="" type="checkbox"/>	Fixed Costi...
WA	WA	500-1...	510-000	500-3...	610-1...	610-200	612-000	330-000	<input checked="" type="checkbox"/>	Weighted ...

11 Groups

Session 3 : Map Project Code in Maintain Location

Step 1 : Click on Stock

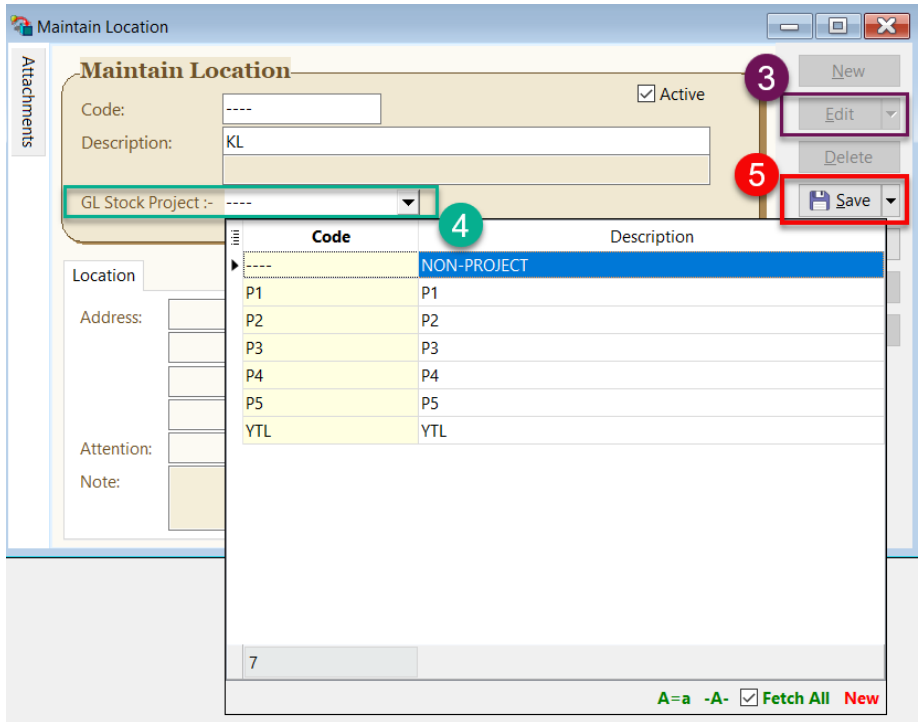
Step 2 : Click on Maintain Location



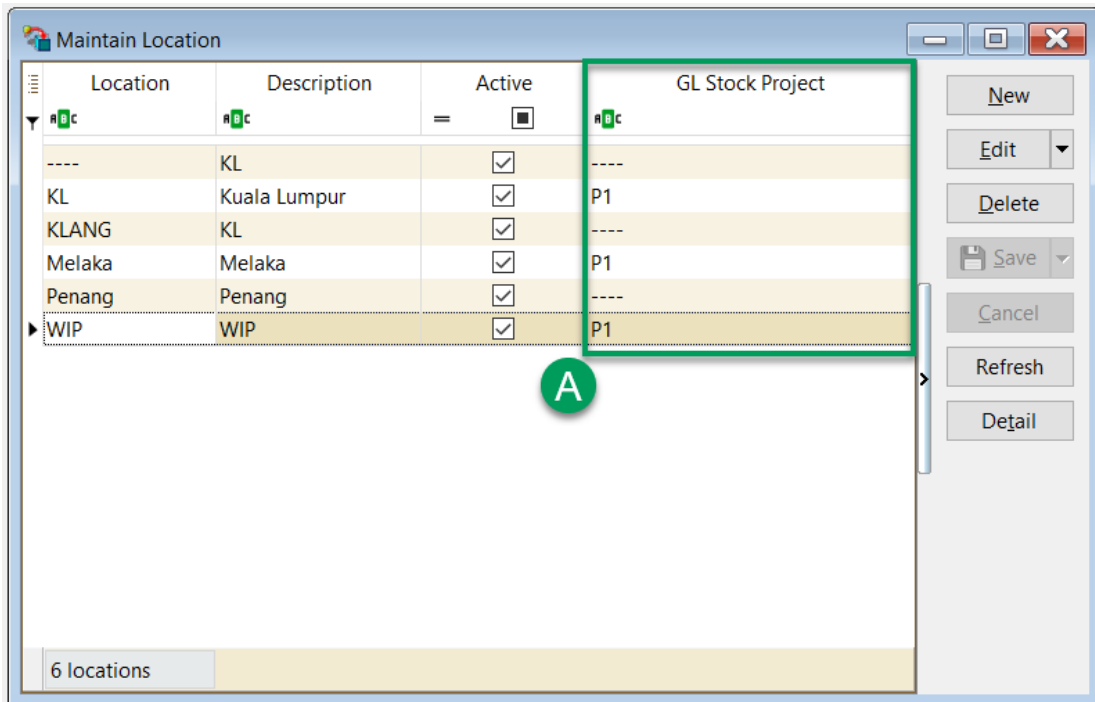
Step 3 : Click on Edit

Step 4 : You can set your stock project for each location

Step 5 : Save



Ensure that all Location are mapped to the **A-Project Code**



Note : May ignore this step if you have only 1 Project.

Session 4 : Maintain Stock Month End, to show the total Stock Value for default project and P1

Project Code : ----

Closing Stock : 308534.22

Stock Month End Balance

Date To: 31/12/2023

Group/Sort By: Location, Stock Group, Batch, Item Code, Category

Print Active Item
 In-Active Item
 Merge Same Cost (FIFO Only)
 Include Zero Balance
 Calculate Serial Number

Apply

Stock Month End Balance

Drag a column header here to group by that column or pressing CTRL key with dragged column to merge grouping columns

StockGroup	ItemCode	Location	Batch	UTD Qty	Unit Cost	PROJECT	UTD Cost
ACC	ANT	----		-1.00	0.00	----	0.00
ACC	test - reorder	----		-17.00	0.00	----	0.00
ACC	tyy	----		1.00	330.00	----	330.00
BEDDING ACCESSORIES	123456	----		2.00	9,215.00	----	18,430.00
BEDDING ACCESSORIES	ALC001	----		-23.55	0.00	----	0.00
BEDDING ACCESSORIES	Batch - test	----		-2.00	0.00	----	0.00
BEDDING ACCESSORIES	FIFO	----		102.00	30.39	----	3,100.00
	95						308,534.22

(Location,PROJECT = ----)

Update GL Stock Value

Qty	Cost
-1.00	0.00

Account	Stock	Project	Current
330-000	STOCK	Project: P1	Current:
330-000	STOCK	Project: ----	Current:

Session 5 : Apply Financial Report will auto update Stock value

When you apply **Profit & Loss Statement, Balance Sheet or Trial Balance Report**, system will automatically retrieve the Stock value from Stock Month End Balance and present it in financial report. Additionally, the system will update closing Stock value to **Maintain Stock Value**.

This is a sample of a Balance Sheet Statement report to show a **Closing Stock Value**.

Project : ()		20/12/2023 16:04:04	
		ADMIN	
Testing Company (200301008596 (611016-M))			
Statement Of Financial Position As At 20/12/2023			
Page 1 of 1			
	Total Project	%	P1
NON-CURRENT ASSETS RM			
FURNITURE & FITTINGS	(600.00)	0.0	(600.00)
ACCUM DEPRN. - FURNITURE & FITTINGS	5,100.00	0.0	5,100.00
OFFICE EQUIPMENT	557.69	0.0	557.69
MOTOR VEHICLE	(93,050.00)	0.0	1,950.00
	(87,992.31)	0.0	7,007.69
CURRENT ASSETS			
TRADE DEBTORS	406,520,179.29	42.5	06,519,315.79
OTHER DEBTORS	(500.00)	0.0	(500.00)
CASH AT BANK	550,735,500.83	57.5	50,725,500.83
CASH IN HAND	8,375.00	0.0	8,375.00
PETTY CASH	(50.00)	0.0	(50.00)
STOCK	312,094.22	0.0	308,534.22
PREPAYMENT TO SUPPLIER	195.00	0.0	195.00
	957,575,794.34	100.0	57,561,370.84
	957,487,802.03	0.0	57,568,378.53
TOTAL ASSETS			
EQUITY			
EQUITY	150,500.00	0.0	150,500.00
RETAINED EARNING			
RETAINED EARNING	371,591,011.08	38.8	71,675,926.08
THIS YEAR PROFIT/(LOSS)	(2,164,279.45)	-0.2	(2,167,839.45)
	369,426,731.63	38.6	69,508,086.63

Note : When Fall Outside Maintain Acceptable Trans Date range, the system will no longer retrieve the Stock Value from the Stock Month End Balance and will silently bypass the update.